

Sooma Ltd
Kuortaneenkatu 2
00510 Helsinki, Finland

support@soomamedical.com

+358 10 328 9811

Sooma tDCS™ system

1 Stimulator



2 ComfoTodes (2 pcs)



4 ComfoPads (2pcs)



5 ComfoCap



6 Electrolyte 30ml (0.9% NaCl)



CE



WARNING:
There are risks involved in the use.
Only for trained personnel



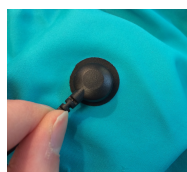
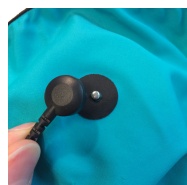
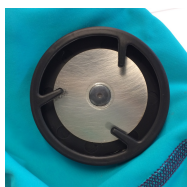
To ensure safe and effective use, user must read instructions for use

1. Prepare cap and electrodes



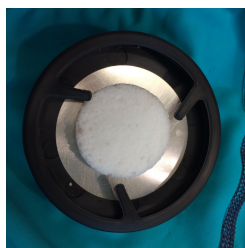
ø 50-54 cm → S
ø 55-58 cm → M
ø 58-62 cm → L

Place cups in cap and connect the cables



2. Soak pads with 0.9% NaCl

Place gel pads



15 ml per pad



Pads thoroughly wet and positioned in electrode cups



3. Place ComfoCap (Red cable on left side)



4. Start session

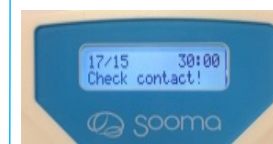
Turn the power on



Connect the cables
Red to Red Black to Black



Press to proceed



Start when contact is under 15 kΩ.



Wait until
"Treatment finished"

Turn the power off

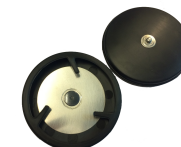


5. Clean

Throw away used pads.



Rinse the electrodes.
Wipe dry and clean



Wash the cap.
Hang to dry



Troubleshooting

1. **Dry/hard spots on pad.** Apply more saline. If the hard spots won't go away, replace the pad with a new one.
2. **Pad falls out when putting the cap on the head.** Be careful when putting the cap on your head so that the pads don't pop out. Check that pads are still in place after putting on the cap. If not, you need to remove the cap and place the pads back in the cups. If the pads break, you must use replace them with new pads.
3. **“Check contact!” message shown.** Carefully press the cup towards your head to release saline. You may also take the cap off and apply more saline. Message disappears when contact quality goes below 15. (e.g. 5/15 or 14/15 is OK, 15/15 or 16/15 will not allow you to start). If contact is 50/15 or more and does not improve when pressing the cup, check connections and cables for damage.

Inspecting accessories

Inspect electrodes before each use. Replace electrodes if electrode surface (metal plate) is broken or bent, the cables frayed or cable insulation cracked.

The head cap fabric can stretch after recurrent washing. Replace head cap and all accessories after 3 months of daily use.

Contraindications



Metal implants inside the skull

Cardiac pacemakers

Acute eczema in the intended stimulation area

Warning



Always use new pads.

Pads cannot be reused.

Remnant electrolyte may change the distribution of electric current.

Repeated soaking may promote colonization of microorganisms.

Cleaning

After each session

1. Discard used pads.
2. With a disinfection solution wipe the body of the device, the cables and connectors.
3. Rinse the electrodes with warm running water and wipe clean and dry with paper towel.
4. Rinse the head cap with warm running water.
5. Let the electrodes and the head cap dry completely before next session.

NOTE: Improper or insufficient cleaning of the electrodes may decrease the life expectancy of the device and reusable accessories.

Wash the head cap between patients

- A. Hand-wash or
- B. Machine wash in 40°C synthetic fabrics program